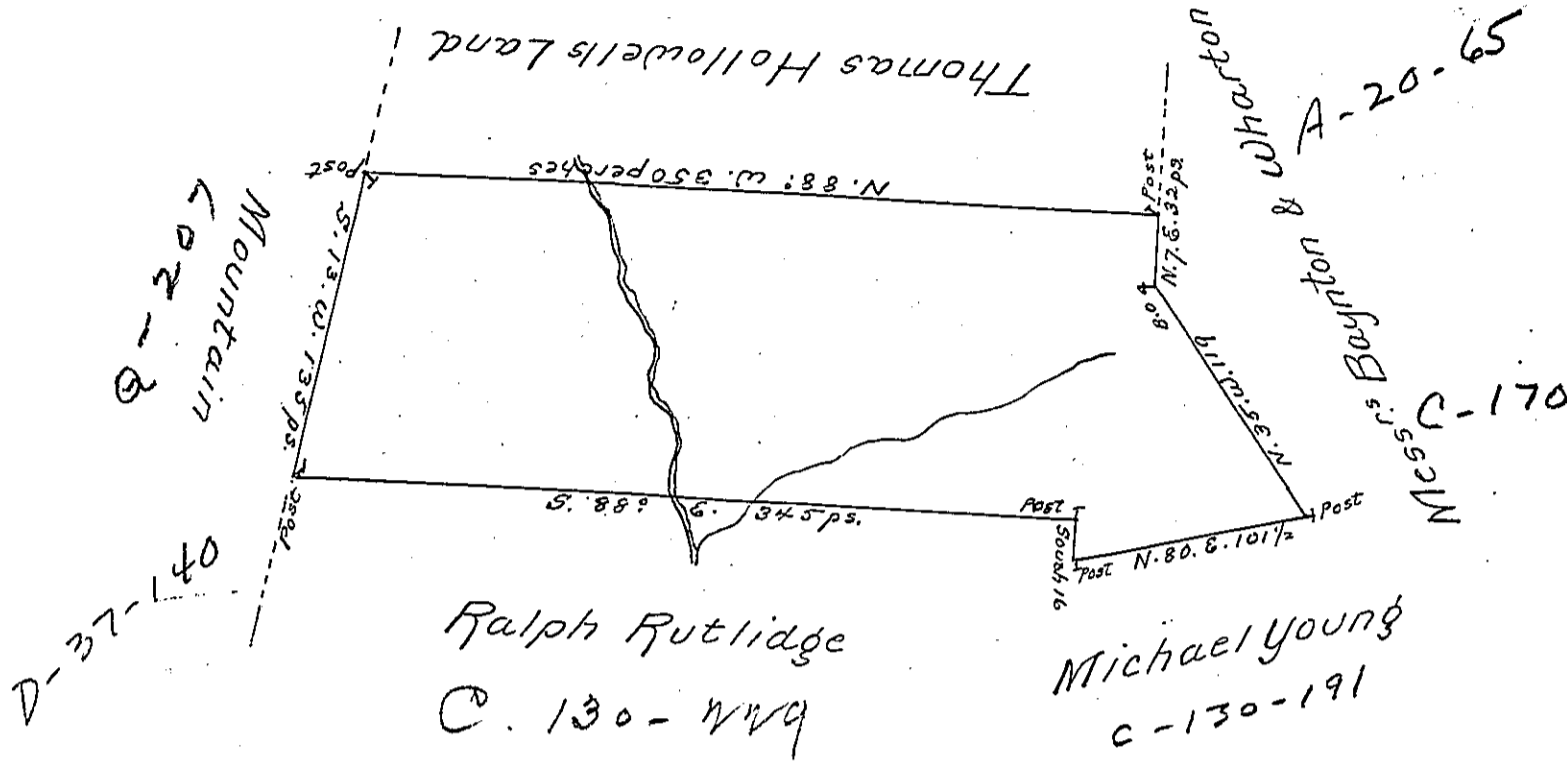


C. 130-194



A Draught of a Tract of Land situate on Jennings's Run in the County of Cumberland containing <sup>five acres and a half</sup> ~~Three hundred and twenty three acres and a quarter~~ and the usual allowance of six acres <sup>for</sup> ~~for~~ Roads &c. Surveyed the 11<sup>th</sup> day of October 1767 for Patrick Redmond in pursuance of an order No. 4323 dated the 22<sup>d</sup> day of August 1767.

Richard Tra Dpy Survey  
 To John Lukens Esqr. Surveyor General  
 Correct 305 1/2

IN TESTIMONY that the above is a copy of the original remaining on file in the Department of Internal Affairs of Pennsylvania, made conformably to an Act of Assembly approved the 16th day of February, 1833, I have hereunto set my Hand and caused the Seal of said Department to be affixed at Harrisburg, this fourth day of August 1903

*Isaac R. Brown*  
 Secretary of Internal Affairs.